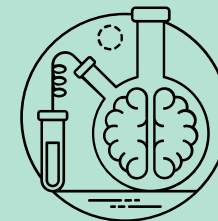


BEHAVIOURAL NEUROSCIENCES SPECIALIZATION



Courses for Students Enrolled Prior to Fall 2023

FIRST YEAR

BIOL 1506E Biology I
BIOL 1507E Biology II
CHMI 1006E General Chemistry I#
CHMI 1007E General Chemistry II
PHYS 1006E Introductory Physics I
OR PHYS 1206E Physics for the Life Science I
PHYS 1007E Introductory Physics II
OR PHYS 1207E Physics for the Life Science II
PSYC 1105E Introduction to Psychology
6 credits in MATH or COSC

Students lacking grade 12 4U Chemistry must first take CHMI 1041.

FOURTH YEAR

CHMI 3217E Biochemistry of Nucleic Acids
OR CHMI 4217E Biomembranes, Structure and Function
BIOL 4035E Research and Seminar
NSCI/PSYC 4706E Advanced Neuroanatomy
NSCI/PSYC 4907E Current Developments in the
Neurosciences
PSYC 3256E Design and Analysis I
OR 3 CHMI credits at the 3000 or 4000 level

6 credits from the following:

- BIOL 4717E Animal Behaviour
 - PSYC 4206E Adolescent and Adult Clinical Psychology
 - PSYC 4207E Clinical Child Psychology
 - NSCI/PSYC 4707E Behaviour and the Electromagnetic
Chemical Basis of Behaviour
- 6 elective credits

SECOND & THIRD YEARS

CHMI 2227E Biochemistry I
CHMI 2426E Organic Chemistry I
CHMI 2427E Organic Chemistry II
CHMI 3226E Biochemistry II
BIOL 3327E Experimental Methods in Biology
NSCI/PSYC 2606E Brain and Behaviour
NSCI/PSYC 2617E Human Neuropsychology
NSCI/PSYC 3506E Neuropharmacology
NSCI/PSYC 3507E Behavioural Neurobiology
STAT 2126E Introduction to Statistics
CHMI 4297E Biochemistry of the Immune System
3 PSYC credits at the 2000 or 3000 level

6 BIOL credits from the following:

- BIOL 2007E Genetics
- BIOL 2026E Introduction to Microbiology
- BIOL 3026E Applied and Environmental Microbiology
- BIOL 3726E Animal Histology
- BIOL 3756E Vertebrate Physiology
- BIOL 4797E Environmental Physiology

12 upper year BIOL credits at least 6 of which
must be at the 3000 or 4000 level.

6 elective credits in the sciences in subjects
other than BIOL and CHMI.

**Note: Students may not exceed 48
credits at the 1000 or 9100 level in
their degree program.**

